

Purified Anti-Human CD14 Antibody[H332-8F4]

catalog number: AN008030P

Note: *Centrifuge before opening to ensure complete recovery of vial contents.*

Description

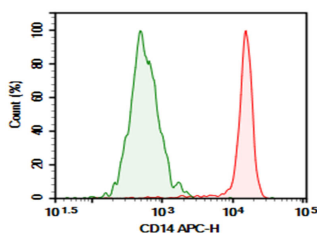
Reactivity	Human
Immunogen	Recombinant Human CD14 protein
Host	Rat
Isotype	Rat IgG1, κ
Clone	H332-8F4
Purification	>98%, Protein A/G purified
Buffer	Phosphate-buffered solution, pH 7.2, containing 0.05% non-protein stabilizer. Dialyze to completely remove the stabilizer prior to labeling.

Applications

Recommended Dilution

FCM	2 $\mu\text{g}/\text{mL}$ (0.5×10^6 - 1×10^6 cells)
------------	--

Data



Human peripheral blood monocytes cell were stained with 0.2 μg Purified Anti-Human CD14 Antibody[H332-8F4] (Right) and 0.2 μg Rat IgG1, κ Isotype Control (Left), followed by APC-conjugated Goat Anti-Rat IgG Secondary Antibody.

Preparation & Storage

Storage	Store at 4°C valid for 12 months or -20°C valid for long term storage, avoid freeze / thaw cycles.
Shipping	Ice bag

Background

The cluster of differentiation (CD) system is commonly used as cell markers in immunophenotyping. Different kinds of cells in the immune system can be identified through the surface CD molecules associating with the immune function of the cell. There are more than 320 CD unique clusters and subclusters have been identified. Some of the CD molecules serve as receptors or ligands important to the cell through initiating a signal cascade which then alter the behavior of the cell. Some CD proteins do not take part in cell signal process but have other functions such as cell adhesion. Cluster of differentiation 14 (CD14) is a member of the CD system. It takes its name from its inclusion in the CD molecule surface marker proteins. CD14 exists in two forms: a form anchored into the membrane or a soluble form. CD14 was found expressed in macrophages, neutrophil granulocyte and dendritic cells. The major function is to serve as a co-receptor (along with TLR4 and MD-2) for the bacterial lipopolysaccharide (LPS) and other pathogen-associated molecular patterns.

For Research Use Only